

Visit Texas Die Casting

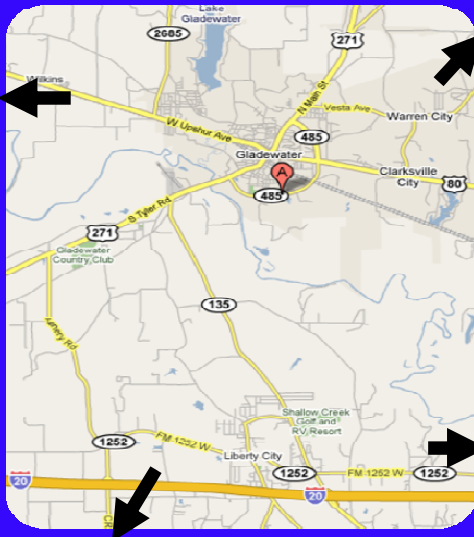
We invite you to visit our facility and meet our staff. We are proud of our organization and the quality work we produce. We look forward to the opportunity to be of service to you by providing the continued dedication to excellence that is the goal of TEXAS DIE CASTING.

TEXAS DIE CASTING, INC.



DALLAS
100 miles

TEXARKANA
90 miles



HOUSTON
200 miles

SHREVEPORT
LA
80 miles

Custom Aluminum DIE CASTING



Texas Die Casting, Inc.
"Being A Part of Your Success"

P.O. Box 1617
600 loop S. Loop 485
Gladwater, TX 75647
www.texasdiecasting.com
Office: (903) 845-2224
Fax: (903) 845-6155



Texas Die Casting, Inc.

"Being A Part of Your Success"

TEXAS DIE CASTING

opened in Gladewater, Texas in 1984 with a 28,000 square foot manufacturing facility. With hard work, outstanding quality, and dependable service we have successfully expanded our facility to exceed 75,000 square feet and have tripled our manufacturing capabilities.

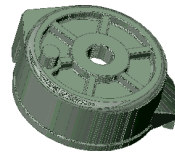
In addition to outstanding growth in our die cast department, our secondary machining operations have continued to grow to meet the varied needs of our customers, including: CNC Machining, drilling, tapping, turning, boring, milling, sanding, shot blasting, vibratory finish, and more.

Our continuous Improvement methodologies include Theory of Constraints, Lean Manufacturing and Total Quality Management,

MW Universal, the parent company of MW Texas Die Casting, also offers forging, machining, stamping, tool & die, plastic injection molding & assembly and sequencing.

DIE CASTING DEPARTMENT

- (7) 400 Ton – Die Cast Machines
- (10) 600 Ton – Die Cast Machines
- (2) 800 Ton – Die Cast Machines



FINISHING DEPARTMENT

- (20) 20-30 Ton – Hydraulic Trim Press
- (2) 6 Cu. Ft. Shot Blaster
- (3) 20 Cu. Ft. Vibratory Finish Machine
- (1) DAEWOO 6S CNC Turning Center
- (1) LYNX 200 CNC Turning Center
- (1) DAEWOO DMV-500 Vertical CNC Mill
- (1) HAAS VF2SS Vertical CNC Mill
- (3) 6" Warner & Swasey Automatic Chucker
- (1) Suga Automatic Chucker Lathe
- (3) Vertical Lead Screw Tapping Machines
- (3) Multi-Spindle Heads
- (2) Speedy Cut Tapping Machines
- (1) Vertical/Horizontal Tapping Head
- (1) 60 Ton Crank Press

QUALITY ASSURANCE

- (1) Giddings and Lewis DCC - CMM
- (1) 14" Ø Optical Comparator
- (1) Machinist Microscope
- (1) Mitutoyo Digital Height Gage
- (1) Brown & Sharp Digital Height Gage
- (1) Micro VU Optical Comparator 100x w/monitor



TOOLING DEPARTMENT

- (1) Meta-Lax Stress Relief System for Tooling
- (1) 19" Summit Engine Lathe
- (2) 15" Clausing Engine Lathe
- (2) Series I Bridgeport Mill
- (1) Series II Bridgeport Mill
- (1) 12"-28" Surface Grinder
- (2) 6"-18" Surface Grinder
- (1) Tool Cutter Grinder
- (1) Tool Post Grinder
- (1) Vertical Saw
- (1) Horizontal Saw
- (1) Radial Cut Off Saw
- (1) Stick & Tig Welder
- (1) Heat Treat Furnace
- (1) Rockwell Hardness Tester
- (1) Glass Bead Blaster



WWW.TEXASDIECASTING.COM

P.O. Box 1617 – 600 S. Loop 485 Gladewater, TX 75647

Quality
Tool Maintenance
Manufacturing
Engineering
Service
Safety